

EQUO CHAIR

THE NEW GENERATION SWIVEL CHAIR.

EQUO defines new standards with its innovative concept of interchangeability and sustainable design. Thanks to the modular design, parts

of the swivel chair can be replaced easily and directly at the place of use, which significantly increases the service life.

Design: Simon Schoßböck

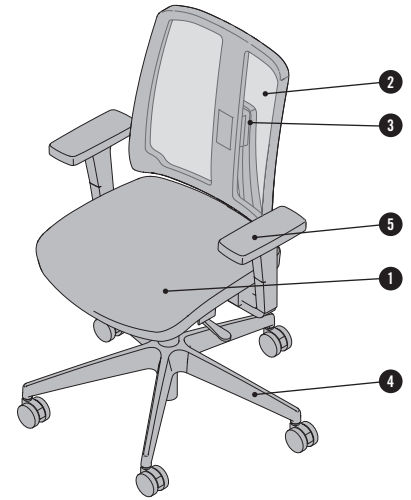


bene

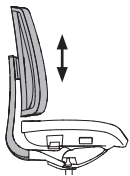
INSPIRING OFFICES. SINCE 1790.

PRODUCT DESCRIPTION

- 1 Seat upholstery:** Ergonomically shaped seat pad made of polyurethane cold foam.
A flame-resistant version (CRIB 5) is available as an option.
Various fabric and leather collections offer a range of choices for the seat cover.
- 2 Backrest:** The backrest support can be separated from the seat mechanism at any time without tools, making it easier to change the cover. The backrest itself is attached to the backrest support and can be adjusted in height by means of locking steps. Available with mesh, fabric or leather cover.
Mesh cover: Attached along the frame with keder and groove. Fabric and leather cover: Pulled over the existing mesh backrest as a slipcover and closed with zippers.
- 3 Backrest cover:** Optionally available in synthetic material (same colour as mechanism and base), for fabric and leather (same as backrest cover), for mesh backrest (same as seat cover).
- 4 Frame:** 5-star swivel base made of plastic, in graphite black or stone white. Comes standard with hard castors for soft floors and soft castors for hard floors. The castors are always finished in black.
- 5 Armrests:** 2D armrests / 4D armrests: Plastic with armrest pads made of polypropylene or polyurethane, in black. 4D armrests also available with TPU padding, in graphite black. 3D-armrests with armrest pads made of TPU, in graphite black. The armrest sleeves come in graphite black or stone white.



BACK



Height adjustable

PNEUMATIC SPRING

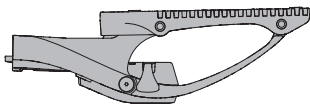


Standard lift
Adjustment range 100 mm

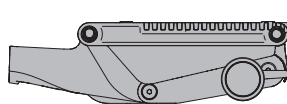


Telescopic lift
Adjustment range 160 mm

MECHANISM

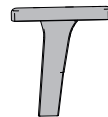


Synchro-mechanism with seat depth adjustment, optionally with individually adjustable spring force for 45–135 kg body weight. Maximum user weight 150 kg

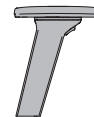


Synchro-mechanism with seat depth and tilt adjustment, with individually adjustable spring force for 45–135 kg body weight. Maximum user weight 150 kg

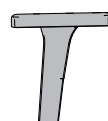
ARMRESTS



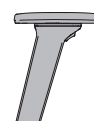
2D armrests
Adjustable in height and width



3D armrests
Adjustable in height, width and depth

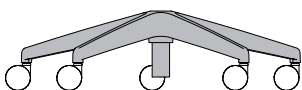


4D armrests
Height, width and depth adjustable, 25° outward rotation

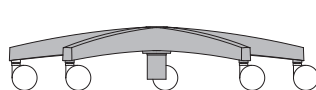


4D armrests
Height, width and depth adjustable, pad can be rotated 360°

SWIVEL BASE



Diameter 680 mm



Diameter 710 mm

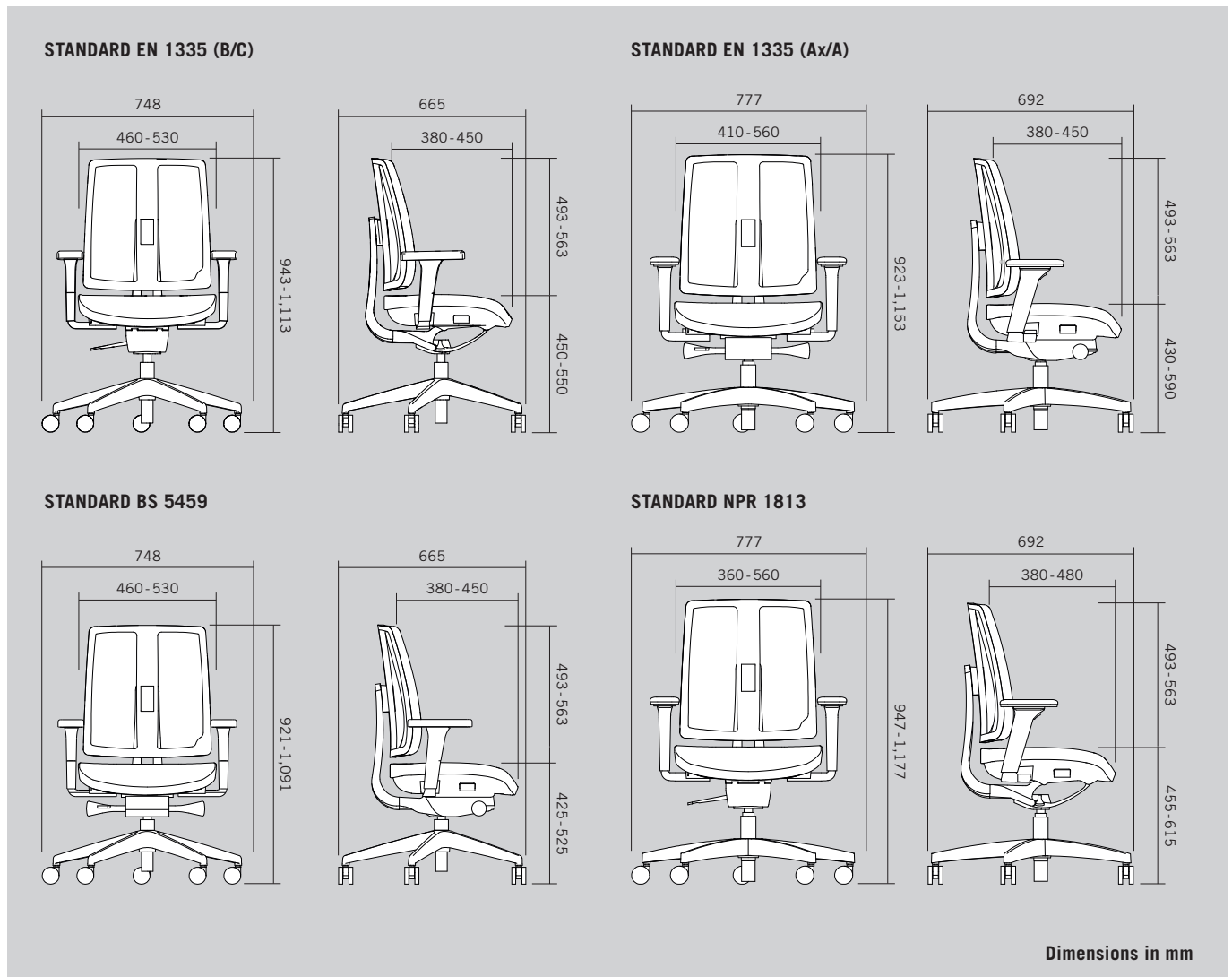
STANDARDS AND DIMENSIONS

STANDARDS

The following overview shows the configurations of the EQUO Chair that meet the requirements of various standards. These configurations can also be managed in the pCon software tools.

	Standard EN 1335 (B/C)	Standard EN 1335 (A _x /A)	Standard BS 5459	Standard NPR 1813
Synchro-mechanism with seat depth adjustment	•			•
Synchro-mechanism with seat depth and tilt adjustment	•	•	•	
Pneumatic spring with standard lift	•		•	
Pneumatic spring with telescopic lift		•		•
Swivel base, with diameter 680 mm	•		•	
Swivel base, with diameter 710 mm		•		•
Armrests 2D, with armrest pads of PP or PU	•			
Armrests 4D, 25°, with armrest pads of PP or PU	•			
Armrests 3D, with armrest pads of TPU		•		
Armrests 4D, 360°, with armrest pads of TPU				•
Flame-resistant seat foam (CRIB 5)			•	

DIMENSIONS



FUNCTION



Seat height adjustment

The desired seat height is adjusted by pressing the lever on the right. Seat height adjustment range 100 mm or 160 mm.



Backrest height adjustment

The position can be adjusted by lifting the back to various locking positions. From the top position, it can be adjusted back down again. Height adjustment range 70 mm.

The height adjustability of the ergonomically shaped backrest makes an additional lumbar support unnecessary.



Seat tilt adjustment

The seat angle can be tilted forwards by 3.9 degrees.



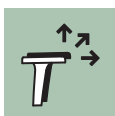
Locking the backrest

The synchronised movement of the seat and backrest can be locked in the neutral position or in three other positions.



Seat depth adjustment

The seat depth can be extended by up to 70 mm (7 raster positions) or 100 mm (10 raster positions) depending on the chair version.



Armrests

- **2D armrests:** Adjustable in height and width. Adjustment range: Height 100 mm / width 70 mm.
- **3D armrests:** Adjustable in height, width and depth. Adjustment range: Height 115 mm / width 70 mm / depth 70 mm.
- **4D armrests:** Adjustable in height, width and depth. Adjustment range: Height 100 mm / width 70 mm / depth 60 mm / 25° outward rotation.
- **4D armrests:** Height, width and depth adjustable, rotatable. Adjustment range: Height 115 mm / width 70 mm / depth 70 mm / rotation range 360°.



Backrest resistance

Synchro-mechanism with and without automatic weight adjustment. Quick and easy to adjust while sitting.

• Automatic weight adjustment:

The contact pressure of the backrest is automatically adjusted to the user's body weight.

• Manually adjustable spring force for backrest:

The contact pressure of the backrest can be adjusted to the user's individual comfort preference. Adjustment range: 45 - 135 kg body weight.

• Maximum weight capacity: 150 kg

SUSTAINABILITY

EQUO Chair was developed to conserve resources in line with a clear commitment to sustainability. For the first time, all heavily stressed elements can be cleaned by the end customer and replaced without tools.



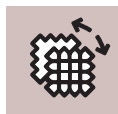
Made in Europe

All components are manufactured in Europe (depending on the selected cover).



Cleaning

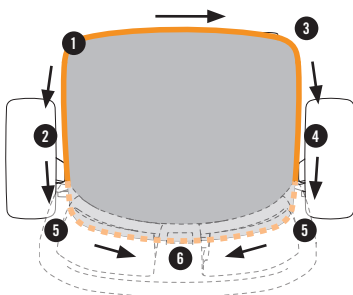
All covers and pads can be cleaned when soiled in accordance with the cleaning instructions of the respective manufacturer.



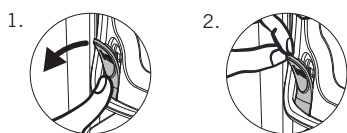
Replaceable

All mesh, leather and fabric components can be replaced by the end user without tools if required.

REPLACEABLE Seat cover



Using the push-tab:



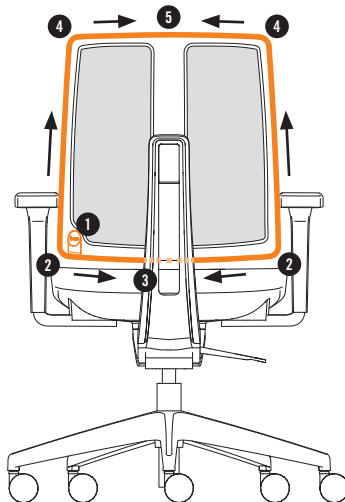
To remove:

Pressing below the push-tab releases the magnet, allowing the cover to be removed using the tab.

To fit:

To ensure that the cover is correctly aligned, the push-tab must first be positioned in the opening provided on the front left. The magnet assists with the positioning. Starting from the push-tab, first press the keder into the groove on the left front corner, continuing towards the back along the left side. Then work along the front edge and over the front right corner, continuing towards the back on the right side. The cover is then fastened via the two rear corners with the closure along the rear edge.

Mesh cover



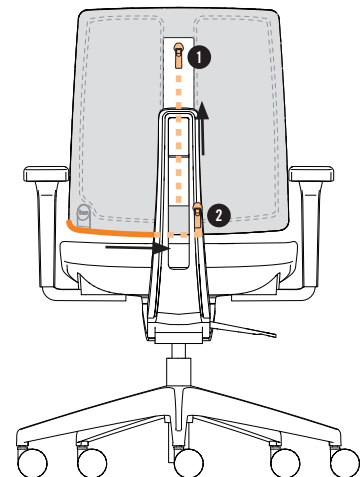
To remove:

Pressing below the push-tab releases the magnet, allowing the cover to be removed using the tab.

To fit:

To ensure that the mesh is correctly aligned, the Bene push-tab must first be positioned in the intended opening. The magnet assists with the positioning. Starting from the push-tab, first press the keder into the grooves of both lower corners, continuing upwards in parallel. The top edge forms the closure.

Fabric and leather cover



To remove:

Pressing below the push-tab releases the magnet, allowing the cover to be removed using the tab.

To fit:

Pulled over the existing mesh backrest as a slipcover and closed with zippers. Before closing the first zipper, make sure that all seams are properly pulled to the edges of the backrest.

The cover must always be pulled over the existing mesh cover!

COLOURS & MATERIALS

SOLID-COLOURED PLASTIC



Graphite black

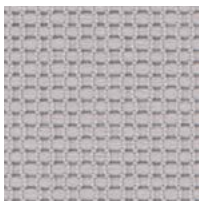


Stone white

MESH



Energy - col 8033



Energy - col 8027

FABRIC AND LEATHER



Various fabric and leather collections are available as cover materials.

Material origin and production in Europe:

Fabric collections: Step, Step Melange, Coda, Elle, Energy.

Leather collection: Spectrum.

Production in Europe, material origin outside of Europe:

Fabric collections: Era, Urban Plus, Xtreme Plus, Runner, Omega, Assam, Remix, Europost, Mainline Flax, Fox, Fiord, Steelcut, Stamskin Top, Hallingdal, Steelcut Trio, Divina Melange, Divina MD, Opera.

Leather collection: Ultra.

More information about the specific collections is available at www.bene.com.